

The Bundaberg District Canegrower

Volume 17, Issue 6
August 2022

In this Issue:

2022 Season Indicative
Advances Program

2

Burning Times for Cane

3

Category C Disaster Grants Key
Dates

3

Relative CCS

3

How to Calculate Relative CCS

4

Department of Environment and
Science Audit
of North Qld Growers

5

Fatigue Management

5

Weatherlink Service

6

Small Business Support and
Wellness Package

7

Sugar Services News

8

Report a Council Issue with Snap
Send Solve

8

Chair's Update

Finally the weather has given us a break allowing most growers a chance to get some cane harvested and some field work done. In saying that, it is still very wet in some fields. Let's hope the fine weather continues.

Mill performance had been a little on the lack lustre side, but the past three (3) weeks have seen a much needed increase in mill throughput.

The spring planting window is now open with many growers already taking advantage of the increasing soil temperature. With the price of sugar where it is, it is an opportunistic time to plant more cane. The One-eye Sett program has been kept busy this season as more growers look for clean seed cane and new varieties.

The sugar price has been quite static albeit a couple of cents down from six (6) months ago with most reports suggesting it should stay in its current range.

With all surface water storages full, and most ground water allocations also +90% we have great potential for the coming seasons. With good prices and high water allocations the opportunity to grow a good crop is now.

Bundaberg CANEGROWERS is in negotiations with Bundaberg Sugar and Queensland Sugar Limited (QSL) towards developing a new Sugar Marketing Agreement. The key benefit of this would be the potential of gaining access to the QSL Direct Portal.

This could help growers both small and large access more flexible pricing options. This will take a while to achieve and we are investigating all options.



As some of you might be aware various insurers have recently increased their rates. Ray Goodwin is always available to review your insurance to find competitive insurers and ensure that your cover is adequate. For more information regarding insurance matters call Ray on 0418 891 783.

Our new Board has been brought up to speed with the many and varied problems and issues and it is great to work beside our very competent staff.

Let's hope for continued dry weather, and good mill performance.

Mark Pressler
Chairman

Top Five (5) Issues We Have Been Working On

1. Ensuring that the Cane Analysis Program is being implemented and that issues are being resolved promptly and as per the program.
2. Investigating Sugar marketing and pricing opportunities and arrangements for Growers.
3. Helping members with electricity tariff selection to optimise affordability.
4. Participating in the Bundaberg Burnett Water Assessment Strategic Group to ensure that our existing water security and future requirements are met.
5. Reviewing procedures for developing a cane Nitrogen and Phosphorus budget which is required before any fertiliser is applied to cane, including all plant cane and ratoons.



Bundaberg CANEGROWERS Ltd Newsletter

Phone (07) 4151 2555 Fax: (07) 4153 1986

Email: bdb_office@bdbcanegrowers.com.au

Website: www.bdbcanegrowers.com.au

Crushing Statistics – Week 11, week ending 28 August 2022



2022 Season Indicative Advances Program

Based on QSL reports 26 August 2022

Advance Dates	Uncommitted Pool Advance (AUD/tonne IPS)	
Payment Date	Increase	To
Initial		\$391.00
Initial QSL Updated	-\$22.00	\$369.00
21-Oct-22	\$37.00	\$406.00
18-Nov-22	\$14.00	\$420.00
16-Dec-22	\$29.00	\$449.00
20-Jan-23	\$27.00	\$476.00
17-Feb-23	\$15.00	\$491.00
17-Mar-23	\$29.00	\$520.00
21-Apr-23	\$15.00	\$535.00
19-May-23	\$15.00	\$550.00
16-Jun-23	\$15.00	\$565.00
Final	\$30.00	\$595.00

Notes:

1. The program above represents indicative advances payable by QSL to Bundaberg Sugar based on estimated pool returns, the marketing plan and forecast cash flows at the time. These indicative amounts will be reviewed on a regular basis and updated for changes in forecasts. **Advances highlighted in bold in the table above have been approved by the QSL Board.**
2. This program is indicative only and should not be taken as a commitment by Queensland Sugar (or Bundaberg Sugar) with regard to the estimated pool return, advance rate or date of increase. The program may change during the season depending on movements in a number of factors including the marketing plan, sugar price and currency movements and timing of cash flows.
3. The advance rates are GST exclusive.
4. The net adjustment, for the estimated US Quota and QSL premiums & costs, to be added / (subtracted) to / (from) ICE No.11 and Foreign Exchange pricing results for the Committed Pools (e.g. Target Price Contract) is **\$34.24**.

Disclaimer: This report has been prepared for general information only. It does not have regard to the specific circumstances of any individual or group who may read it. It is not intended as an offer to buy or sell commodities, futures or options, nor is the accuracy of the report content guaranteed. However, as market circumstances can change quickly, Queensland Sugar Limited and Bundaberg Sugar Ltd disclaim any responsibility or liability for decisions or actions of any individual relying in whole or in part on information contained herein. Individuals contemplating decisions relating to any material discussed in this publication should take appropriate financial advice.

Burning Times for Cane

Growers are reminded that there are restrictions on when cane or trash can be burnt so that they comply with either the Cane Firing Notice or the fire wardens permit. Failure to comply with the conditions of either the notice or permit can lead to serious consequences for both the grower and the industry.

If a grower lights a fire outside the conditions of either the Notice or permit, they may become liable for any damage from the fire as well as any costs associated with the call out of any fire brigades. Growers may also no longer be covered for any losses or expenses from their insurance company if they operate outside the conditions of the Notice or permit.

The local sugar industry has worked hard to create a reputation for responsible burning practices which affords additional benefits that we often take for granted. One of these is the ability to continue to burn cane and tops under modified time restrictions when the rest of the region has had all permits cancelled.

Under both the Notice and a permit there is no burning between 10am and 2pm, which means that all fires need to be doused during this time. There is also a further restriction in place that states that there is no burning during the listed times based on the local Cane Supply Agreement.

The Bundaberg Collective Supply Contract states that burning cane shall be restricted to between 4pm one day and 9am the next. This means no burning of cane between 9am and 4pm each day. The burning of trash and tops is per the Notice which means no burning between 10am and 2pm. One thing that needs to be considered is that when burning trash and tops, there is dense smoke created which can cause breathing issues as well as visibility issues. It is suggested that the burning of trash and tops also occurs after 4pm to allow school pick up and the associated traffic to be off the roads. ■

Category C Disaster Grants Key Dates

The closing time for the Disaster Assistance Grants is getting closer so that growers who suffered damage and have not yet submitted an application form or those needing to provide invoices and proof of payment to receive additional money need to take note of the following:

- Special Disaster Assistance Grants 10th November to 3rd December

2021 closes 30th September 2022.

- Extraordinary Disaster Assistance Recovery Grants (ex Tropical Cyclone Seth) 7th to 10th January closes 28 October 2022.
- Extraordinary Disaster Assistance Recovery Grants (Southeast Qld Flooding) 22nd February to 5th April closes 5 December 2022.

If any growers are still having issues accessing contractors to do the work or the paddocks and damaged areas are still too wet to repair, contact Matt Leighton on 4151 2555 or on mobile 0437 084 035 to see if a further extension can be granted.

Also, contact Matt if you require assistance in submitting an application. ■

Relative CCS

Sugar content of cane varieties varies throughout the season. It is measured by CCS and is usually low at the start (June), rises to a peak in early October then falls at the end of the season.

To ensure continuity of supply throughout the harvesting season, the relative payment system (relative CCS) is applied. In order to enable growers to supply cane early and late in the season (when CCS is lower) without penalty the growers' CCS is compared to the daily average of the cane supplied to the mill (relative to the mill).

This relatively is transferred across the season average CCS for the whole mill area. This means that a grower supplying cane at CCS 12.5 (mill average CCS) at the beginning of the season will receive the same payment as a grower supply CCS 15 (mill average CCS) in September.

Because harvesting groups cut the crops and individual growers may only supply cane for four or five weeks during the harvesting season, without the relative CCS payment scheme the grower who cut cane during the lower CCS period would be of great disadvantage compared to others.

Although relative CCS averages out CCS across the season growers are still rewarded for producing cane with a high CCS, regardless of when it is harvested.

Payments made to growers using the relative system require an estimated season CCS (base CCS) to determine the adjusted CCS figure above or below the mill average depending on grower relative CCS. This is then placed into the cane price formula agreed by Bundaberg CANEGROWERS and used by Bundaberg Sugar mills.

The formula is:

$$\text{Price of Cane} = \text{price of raw sugar} * x 0.009 x (\text{CCS} - 4) + \$0.6455$$

* price of raw sugar IPS as quoted by QSL.

The grower will receive more or less than the base price per tonne of cane according to the relationship of the grower's daily average CCS to the mill average CCS for that day.

Throughout the crush the base price may be increased or decreased depending on seasonal conditions with resulting adjustments in pay to growers.

At the end of the season the base CCS is converted to actual season CCS, again with adjustments made to cane pays depending on how this final figure compared to the base CCS. ■

How to Calculate Relative CCS

This Example uses three (3) harvesting rounds instead of the usual five (5), however the principle is the same regardless of how many rounds a grower receives.

To calculate the Grower's Daily Relative CCS you compare the difference between the Grower's Daily CCS and the Mill's Daily Average CCS.

1 st Round	Tonnes	Grower's CCS	Mill Average CCS
Grower supplies cane on 3 July	150	13.40	13.20
Grower supplies cane on 4 July	250	13.55	13.50
Grower supplies cane on 5 July	250	13.35	13.30
Total	650		

E.g. 13.40 (Grower's CCS) minus 13.20 (Mill CCS) = 0.20 plus units x 150t = 30 plus units
 13.55 minus 13.50 = 0.05 plus units x 250t = 12.5 plus units
 13.35 minus 13.30 = 0.05 plus units x 250t = 12.5 plus units
 = 55 plus units

then: divide the 55 plus units by tonnes supplied (650) = 0.0846153
 because they are plus units they are added to the Base CCS (13.8)
 $13.8 + 0.0846153 = 13.8846153$ (**Grower's Relative CCS**)

2 nd Round	Tonnes	Grower's CCS	Mill Average CCS
Grower supplies cane on 14 Aug	250	13.35	13.60
Grower supplies cane on 15 Aug	350	13.50	13.80
Grower supplies cane on 16 Aug	350	13.65	13.60
Total	950		

E.g. 13.35 (Grower's CCS) minus 13.60 (Mill CCS) = 0.25 minus units x 250t = 62.5 minus units
 13.50 minus 13.80 = 0.30 minus units x 350t = 105 minus units
 13.65 minus 13.60 = 0.05 plus units x 350t = 17.5 plus units
 = 150 minus units

then: divide 95 minus units (55 plus units + 150 minus units) by tonnes supplied (1600) = -0.059375
 because they are minus units, subtract the answer from the Base CCS (13.8)
 $13.8 - 0.059375 = 13.740625$ (**Grower's Relative CCS**)

3 rd Round	Tonnes	Grower's CCS	Mill Average CCS
Grower supplies cane on 3 Sept	250	14.35	14.10
Grower supplies cane on 4 Sept	350	14.50	14.25
Grower supplies cane on 5 Sept	350	14.45	14.35
Total	950		

E.g. 14.35 (Grower's CCS) minus 14.10 (Mill CCS) = 0.25 plus units x 250t = 62.5 plus units
 14.50 minus 14.25 = 0.25 plus units x 350t = 87.5 plus units
 14.45 minus 14.35 = 0.10 plus units x 350t = 35 plus units
 = 185 plus units

then: divide 90 plus units (95 minus units + 185 plus units) by tonnes supplied (2550) = 0.035294
 because they are plus units add the answer to the Base CCS (13.8)
 $13.8 + 0.035294 = 13.835294$ (**Grower's Relative CCS**)

Note:

- As the Base CCS is adjusted throughout the year you will receive an adjustment payment. When this occurs the grower need to use the new adjusted Base CCS figure in their calculations.
- At season end when the Mill Average (Actual) CCS is substituted for Base CCS, the grower adds or subtracts the plus or minus units from throughout the season from the Mill Average CCS to determine the Grower's Relative CCS.

Department of Environment & Science Audit of North Qld

Cane growers in North Queensland continue to be audited as part of the reef regulations policing undertaken by the State government. Some of the things that have happened so far and with the program are listed below:

- that the auditors visit the same properties multiple times;
- that there will be an additional twenty (20) staff placed around the state to assist with the audit and the responses to growers;
- that smaller growers up north are generally not compliant with record keeping, soil tests and following Six Easy Steps recommendations.

This results in multiple visits to the grower until the grower becomes compliant which is often not until the following year when the opportunities to soil test, follow six easy steps and

record keeping are available.

This List should remind growers in the southern region that since 2019 they should have been recording all fertiliser and chemical application on their farm. The “reef police” can visit farms in the Burnett Mary for compliance and given that DES are recruiting additional staff the possibility of a visit will increase.

Reminder of New Regulations in December 2022

Growers are reminded that come 1 December 2022 the new regulations will come into effect. A short list is provided below:

- any block of cane to be planted in 2023 needs to have a soil test within the last twelve (12) months. This can be reduced if the blocks have the same soil grouping.

– Growers can contact Matt Leighton if they have not seen a copy of the soil grouping for their farm.

- before any fertiliser is applied either at planting or ratoons a Nitrogen (N) and Phosphorus (P) budget, using Six Easy Steps, must be completed by a suitable person.

– Growers must ensure that the total nitrogen and phosphorus fertiliser applied to the farm is equal to or less than the total in the N & P budget.

- all fertiliser and chemicals applied must be recorded as per the current regulations.

For additional information about the upcoming regulations contact Matt Leighton on 0437 084 035. ■

Fatigue Management

As this current crushing season continues and everyone is trying to harvest as much cane as possible and get ready for planting season, there are concerns about the fatigue of growers and their employees.

While fatigue is something that everyone experiences every now and then, there are concerns that some growers and their employees are suffering week in and week out and this has potential to cost the business significantly if an accident occurs.

Generally, as the harvesting progresses there is an accumulated fatigue that could build up and lead to an incident. These could be a rollover, contact with power poles or powerlines or in a worse case scenario an accident with another vehicle.

It is these incidents that bring the business to the attention of WHS officers and police who investigate all the issues regarding compliance to legislation and regulations.

Under WHS there are several relevant sections relating to fatigue management depending on the type of work being conducted.

For vehicles such as haulouts and harvesters which are greater than 4.5 tonne GVM and involve driving on public roads there is a definition of fatigue and how to avoid it based on the guidelines from NHVR.

There is also just fatigue from working long hours without sufficient breaks between days and not having a day away from work to recover.

The confusing part of the NHVR fatigue guidelines is that not all work performed by the grower or their employee is counted as “driving” work under the NHVR. Some general farm work as well as operating vehicles that are not regulated under the heavy vehicle guidelines are not heavy vehicle driving work but can assist in building general fatigue.

Growers need to always be looking for signs of fatigue in their employees as a person may turn up to work fatigued if they have not been to bed or only rested for a short time while away from work. This situation is difficult to manage during the busy harvest when there is not a large pool of available workers.

Contact Matt Leighton on 0437 084 035 if you wish to discuss fatigue management in your business. ■



Regional - Rural - Remote

With over 45 years' experience on the land locally, I have the ability to best market your farm in these changing times.

Jim Mullett

Sale - Rural Specialist

0428 871 799

jim.mullett@raywhite.com

Ray White Bundaberg

raywhitebundaberg.com.au

WeatherLink Service

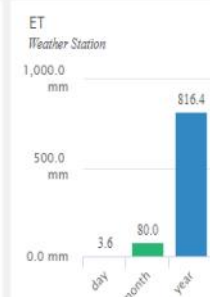
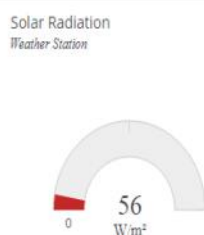
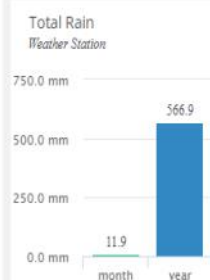
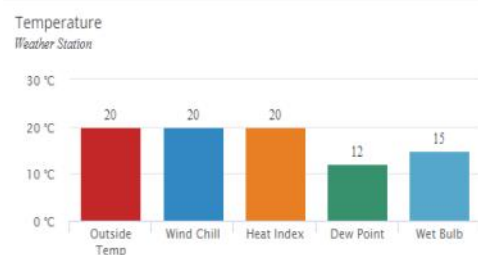
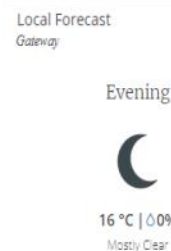
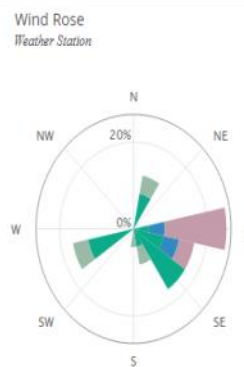
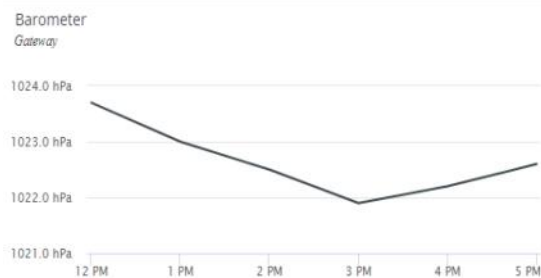
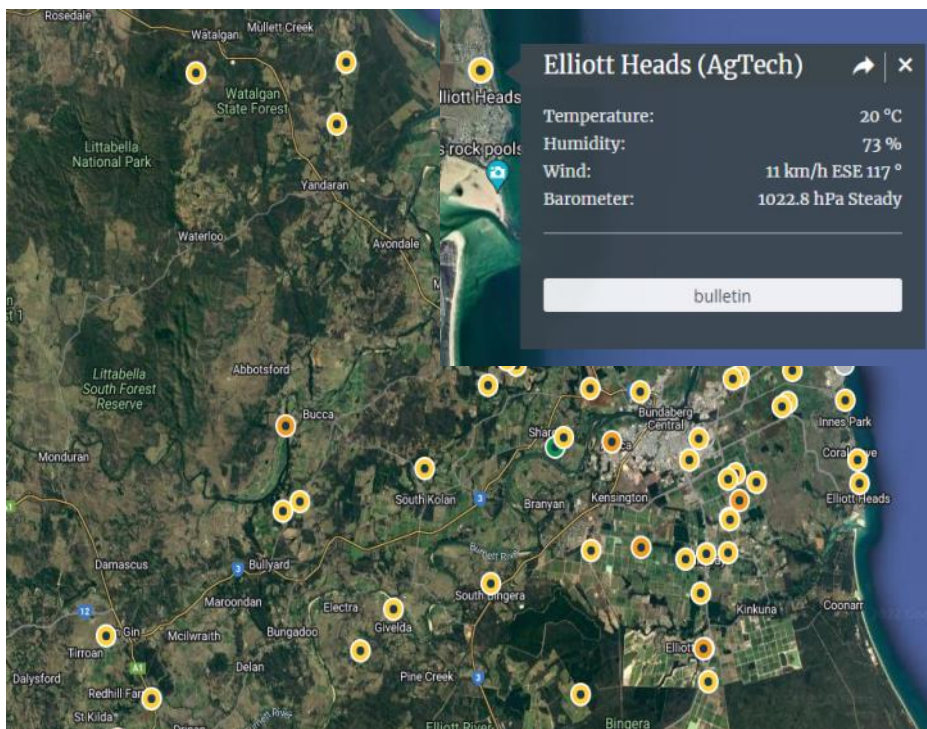
Following the decommissioning of the Sugar Services weather stations, localised weather information is available through the Davis WeatherLink service.

Davis WeatherLink provides over 50 locations in the Bundaberg District that can be accessed via their website www.weatherlink.com.

Once you sign up (free) you can view a snapshot of weather information including temperature, humidity, wind speed and direction and atmospheric pressure from around the world.

By selecting the Bulletin option further detail is available.

If you require assistance signing up or navigating the WeatherLink website please contact the office on 4151 2555. ■



Small Business Support and Wellness Package

The Queensland Government is continuing to support small businesses' economic recovery from the impacts of COVID-19 with the launch of a new Small Business Support and Wellness Package program.

Small businesses will be able to sit down with a locally based adviser and work through their unique and personal business challenges, needs and opportunities – in a free one-on-one, understanding environment.

A wellness coach will help you to alleviate stress so you can take important steps forward, together with other support services.

Getting the right help at the right time will protect you, your business and your staff from the impacts of stress and mental illness.

The new wellness coaches will be available in the coming months. For immediate support, you can access mental health and wellbeing resources for businesses including Beyond Blue's

New Access program especially designed for small business owners. No medical referral is necessary to access this free and confidential service.

The Beyond Blue New Access support program can be accessed by visiting www.beyondblue.org.au/get-support/newaccess or by calling 1300 224 636. The Small Business Financial Counselling Program is also available to provide assistance to small businesses experiencing hardship with no alternative source of impartial support.

The service is delivered through the Rural Financial Service Southern Queensland and further information is available by visiting their website www.rfcssq.org.au or by calling 4622 5500 for Farm Business enquiries or 1300 732 777 for Small Business enquiries.

Looking after your mental health and wellbeing is important to be able to work productively and achieve your business and personal goals. ■

CLASSIFIED & JOB ADVERTISEMENTS

As a free service to financial members, small suitable classified & employment advertisements of up to thirty (30) words only will be printed.

Advertisements will be accepted from non-members, charged at \$11 per seven (7) word line or part thereof.

Contact:
Bundaberg CANEGROWERS Office
on telephone no. 4151 2555 or
fax no. 4153 1986 or email
bdb_office@bdbcanegrowers.com.au

— / —

CLASSIFIEDS

WANTED

Single Row Billet Planter
Ph: 0428 535 385.



CANEGROWERS

Representation on Your Behalf

The Chairman, Elected Members and Staff of Bundaberg CANEGROWERS represented cane growers on a number of occasions. Executive members also attended many Branch meetings and other engagements in their own time.

DATE	MEETING	PURPOSE	FOR MORE INFORMATION CONTACT
20 - 22.07.22	National Irrigators Council Meeting	To represent members	Dale Holliss
27.07.2022	Burnett Mary Regional Group Board Meeting	To represent members	Dale Holliss
08.08.22	District Manager Monthly Meeting	To represent members	Tanya Howard
11.08.22	SRA Weed Management Workshop	To represent members	Matt Leighton
18.08.22	Director Induction Session	To receive an update on governance and accounting matters	Mark Pressler Tanya Howard Anna Attard Sam Ford
22.08.22	BRWAA SAG Meeting	To represent members	Dale Holliss
25.08.22	Finasucre and Bundaberg Sugar Ltd	To discuss matters of mutual interest	Mark Pressler & Directors

Articles appearing in *The Bundaberg District Canegrower* do not necessarily represent the policies and views of Bundaberg CANEGROWERS.



SUGAR SERVICES NEWS

One-eye Sett pricing

Due to significant cost increases in freight, potting mix and other inputs we have had to increase the One-eye sett prices.

As of 30 August One-eye setts will be charged as follows:

Members:

- 55 cents per seedling for bulk orders (5,000 plus)
- 65 cents per seedling for small orders (1 to 4,999)

Non-Members:

- 75 cents per seedling. ■

Bundaberg Sugar Services Limited Annual General Meeting

The Bundaberg Sugar Services Limited Annual General Meeting will be held on 12 October 2022.

Under the BSSL constitution one (1) Grower Elected Director must retire at each Annual General Meeting.

To be a Grower Elected Director you must be a member of the company or a

representative of a corporate member, at least 18 years old, a grower, and a supplier to the Millaquin Mill.

To be eligible for election as a Grower Elected Director the person or some member intending to nominate the person must give notice in writing signed by the nominee giving consent to the nomination.

To be valid the notice must be received at our registered office by close of business Monday, 3 October 2022.

Anyone interested in nominating is requested to contact Company Secretary Dale Holliss on 4151 2555 for further information and a nomination kit. ■

Report a Council Issue with Snap Send Solve



Following recent rain events potholes are becoming an increasing problem and in some cases are damaging vehicles and machinery.

We encourage you to make use of the **Snap Send Solve** phone app to report issues within the region directly to Bundaberg Regional Council.

Snap Send Solve was implemented by Bundaberg Regional Council in 2018, providing residents and visitors an avenue to report faults and issues within the region, using attached photos and geo tagging.

The **Snap Send Solve** app is easy to use, and sending a report is an easy

to follow process. You can download the app on your Android or Apple smart device by visiting Council's website www.bundaberg.qld.gov.au/snap-send-solve and following the appropriate links. ■



If undeliverable return to:



Bundaberg CANEGROWERS Ltd

PO Box 953
BUNDABERG QLD 4670

Bundaberg CANEGROWERS
32 Bourbong Street (PO Box 953)
Bundaberg Qld 4670
Phone: (07) 4151 2555 Fax: (07) 4153 1986
Email: bdb_office@bdbcanegrowers.com.au
Website: www.bdbcanegrowers.com.au
ABN: 66 110 868 801

PRINT
POST
100001222

POSTAGE PAID
AUSTRALIA

PRIORITY